

Date: 5/18/2023

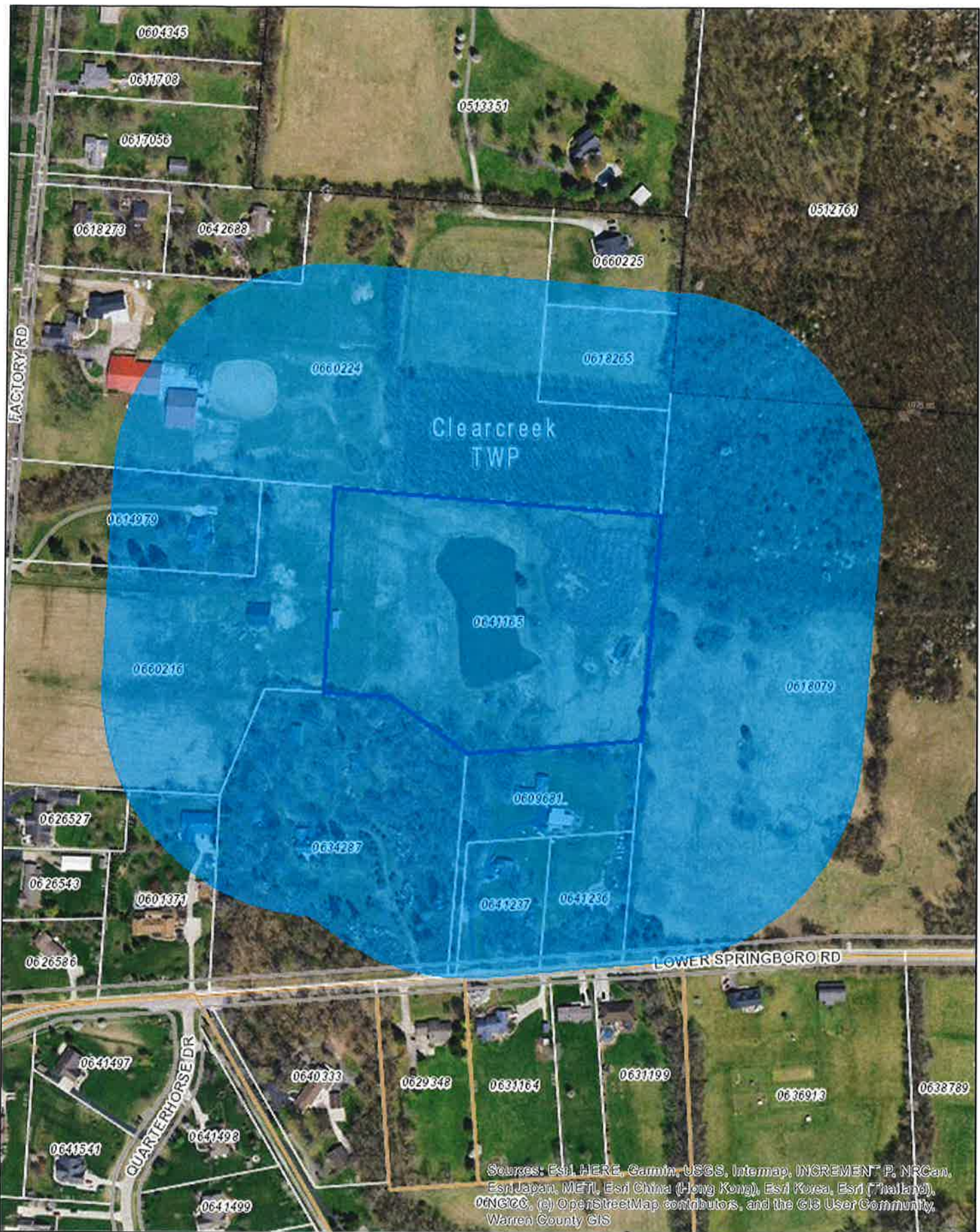
Cadastral Lines	Corporate Line	Parcel Line	Railroad
Other Jurisdiction	County Line	RDW/Utility or Water Line	Subdivision Lot Line
Line Type	Farm Lot Line	Road Right	Tenure and Range Line
Auditor Tract Line	Driveway Line	School Line	Vacant
Civil Township Line	Subdivision Total Line	Section Line	VMS Line
		Section Line	Washed Road Line

500' Notice Area for 2815 Factory Road

1 inch = 376 feet

The provider makes no warranty or representation with respect to its information, its quality or suitability for a particular purpose. This information is provided AS-IS, and the requester assumes the entire risk as to its quality and suitability. The provider will not be liable for direct, indirect, incidental, or consequential damages resulting from any delay in the information. The provider shall have no liability for any other information, programs or data used with or combined with the requested information, including the cost of recovering information programs or data.

23-BZA-004 Exhibit 39A



Sources: Esri, HERE, Garmin, USGS, Intermap, INCREMENT P, NRCan, Esri Japan, METI, Esri China (Hong Kong), Esri Korea, Esri (Thailand), CNIGCC, (c) OpenStreetMap contributors, and the GIS User Community, Warren County GIS

Date: 5/18/2023

Cadastral Lines	Corporate Line	Parcel Line	Hardware
Gallop or Gallop	County Line	ROWU/Right of Way Line	Subdivision Lot Line
Line Type	Road Lot Line	Road ROW	Terrace and Range Line
Audible Text Line	Orchard Line	School Line	Tract Line
Civil Township Line	Subdivision Unit Line	School Lot	VMS Line
			Washed Road Line

500' Notice Area for Parcel 04-13-300-047

1 inch = 376 feet

The provider makes no warranty or representation with regard to its information, its quality or suitability for a particular purpose. This information is provided AS IS, and the user assumes the entire risk as to its quality and suitability. The provider will not be liable for direct, indirect, incidental, or consequential damages resulting from any defect in the information. The provider shall have no liability for any other information, programs or data used with or obtained with the requested information including the cost of recovering information, programs or data.

23-BZA-004 Exhibit 39B