



Sources: Esri, HERE, Garmin, USGS, Intermap, INCREMENT P, NRCan, Esri Japan, METI, Esri China (Hong Kong), Esri Korea, Esri (Thailand), NGCC, (c) OpenStreetMap contributors, and the GIS User Community, Warren County GIS

Cadastral Lines	Corporate Line	Parcel Line	Hardware
<all other values>	County Line	ROW Unknown Width Line	Subdivision Lot Line
Line Type	Farm Lot Line	Road ROW	Township and Range Line
Auditors Tract Line	Overpass Line	School Line	Tract Line
Civil Township Line	Subdivision Limit Line	Section Line	VMS Line
			Vacated Road Line

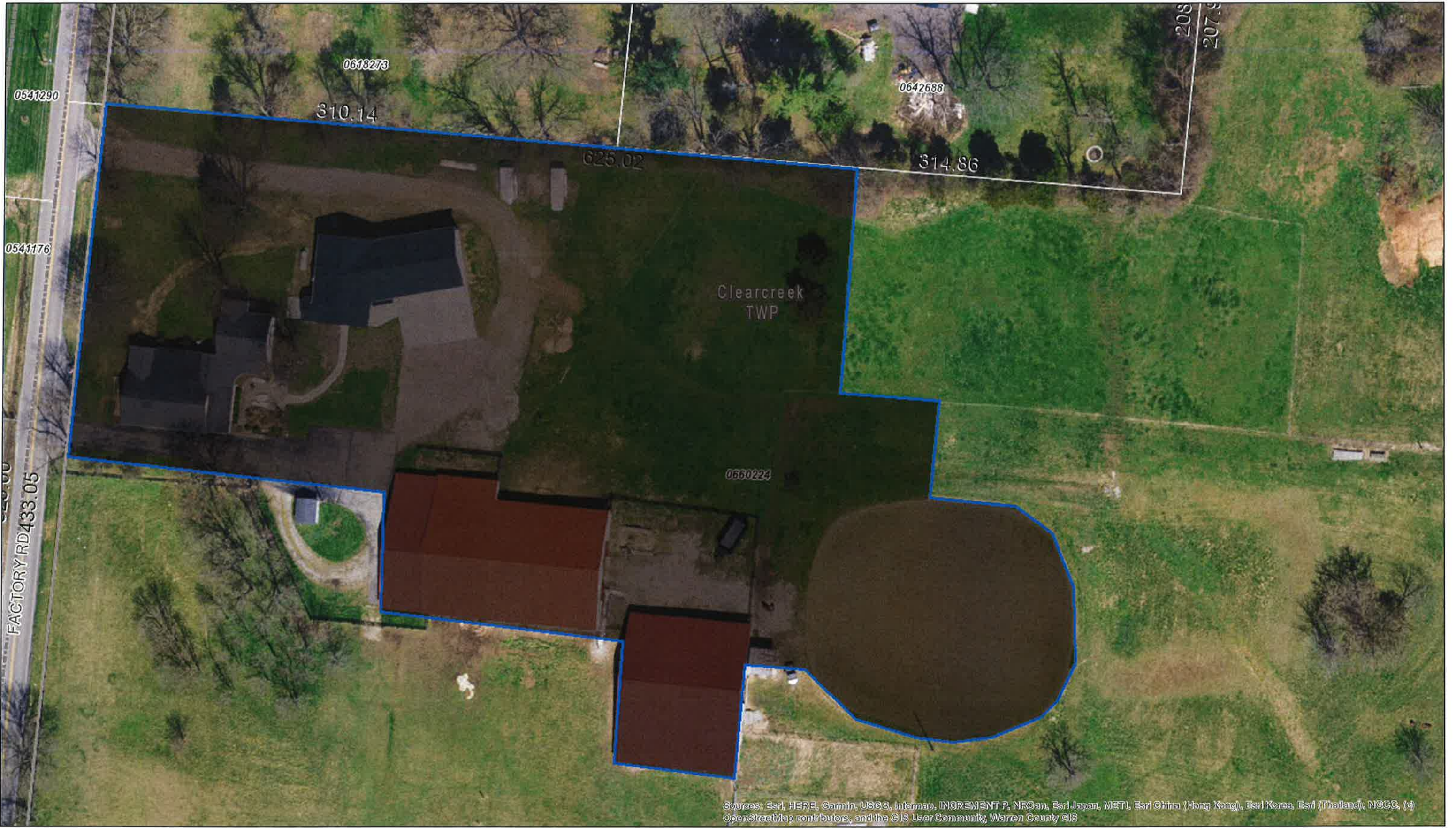
1 inch = 50 feet

Staff Calculated Approximately .45 Acres for Improved Parking Area and Accessways

The provider makes no warranty or representation with respect to this information, its quality or suitability for a particular purpose. This information is provided AS IS, and the requester assumes the entire risk as to its quality and suitability. The provider will not be liable for direct, indirect, incidental, or consequential damages resulting from any defect in the information. The provider shall have no liability for any other information, programs or data used with or combined with the requested information, including the cost of recovering information, programs or data.

23-BZA-004 Exhibit 9

Date: 5/18/2023



Sources: Esri, HERE, Garmin, USGS, Intermap, INCREMENT P, NRCan, Esri Japan, METI, Esri China (Hong Kong), Esri Korea, Esri (Thailand), NCCO, (c) OpenStreetMap contributors, and the GIS User Community, Warren County GIS

Cadastral Lines	Corporate Line	Parcel Line	Hardware
<all other values>	County Line	ROW Unknown Width Line	Subdivision Lot Line
Line Type	Farm Lot Line	Road ROW	Township and Range Line
Auditors Tract Line	Overpass Line	School Line	Tract Line
Civil Township Line	Subdivision Limit Line	Section Line	VMS Line
			Vacated Road Line

1 inch = 50 feet

Staff Calculated Approximately 2.88 Acres Adjacent to Single-Family Dwelling

The provider makes no warranty or representation with respect to this information, its quality or suitability for a particular purpose. This information is provided AS IS, and the requester assumes the entire risk as to its quality and suitability. The provider will not be liable for direct, indirect, incidental, or consequential damages resulting from any defect in the information. The provider shall have no liability for any other information, programs or data used with or combined with the requested information, including the cost of recovering information, programs or data.

23-BZA-004 Exhibit 10

Date: 5/18/2023