

SILVER MILL DEVELOPMENT

LYTLE 5 POINTS RD
CLEARCREEK TOWNSHIP
WARREN COUNTY, OH

PUD CONCEPT PLAN

123 Single Family Lots
296 Multi-Family Units
419 Total Dwelling Units
Site Overall - 170.6 Ac.

Density: 2.46 DU/Ac.
Green Space: 45.9Ac. (27%)
Public Streets: 11.9 Ac.
Private Streets: 3.8 Ac

DEVELOPER:



DESIGN HOMES
CUSTOM WITHIN REACH

8543 Yankee Street
Dayton, OH 45458
(937) 438-3667



1 inch = 300 ft.

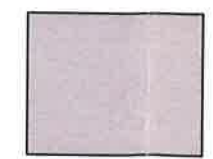
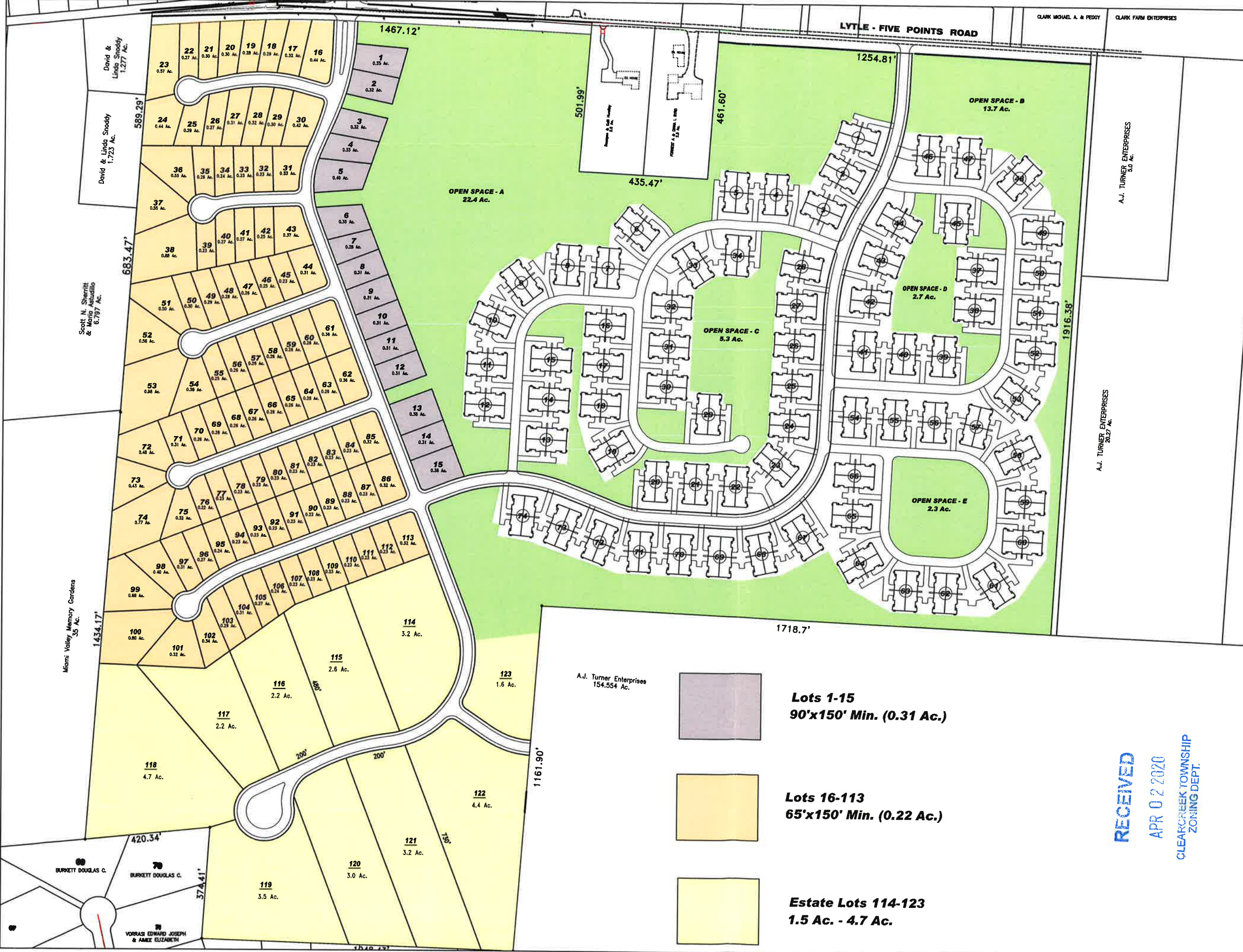
April 1, 2020



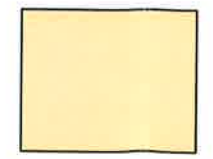
959 Congress Park Drive
Dayton, OH 45459
(937) 434-4810

Engineering / Surveying / Land Planning
Landscape Architecture / GPS Surveying

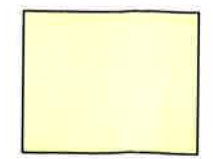
RECEIVED
APR 02 2020
CLEARCREEK TOWNSHIP
ZONING DEPT.



Lots 1-15
90'x150' Min. (0.31 Ac.)



Lots 16-113
65'x150' Min. (0.22 Ac.)



Estate Lots 114-123
1.5 Ac. - 4.7 Ac.