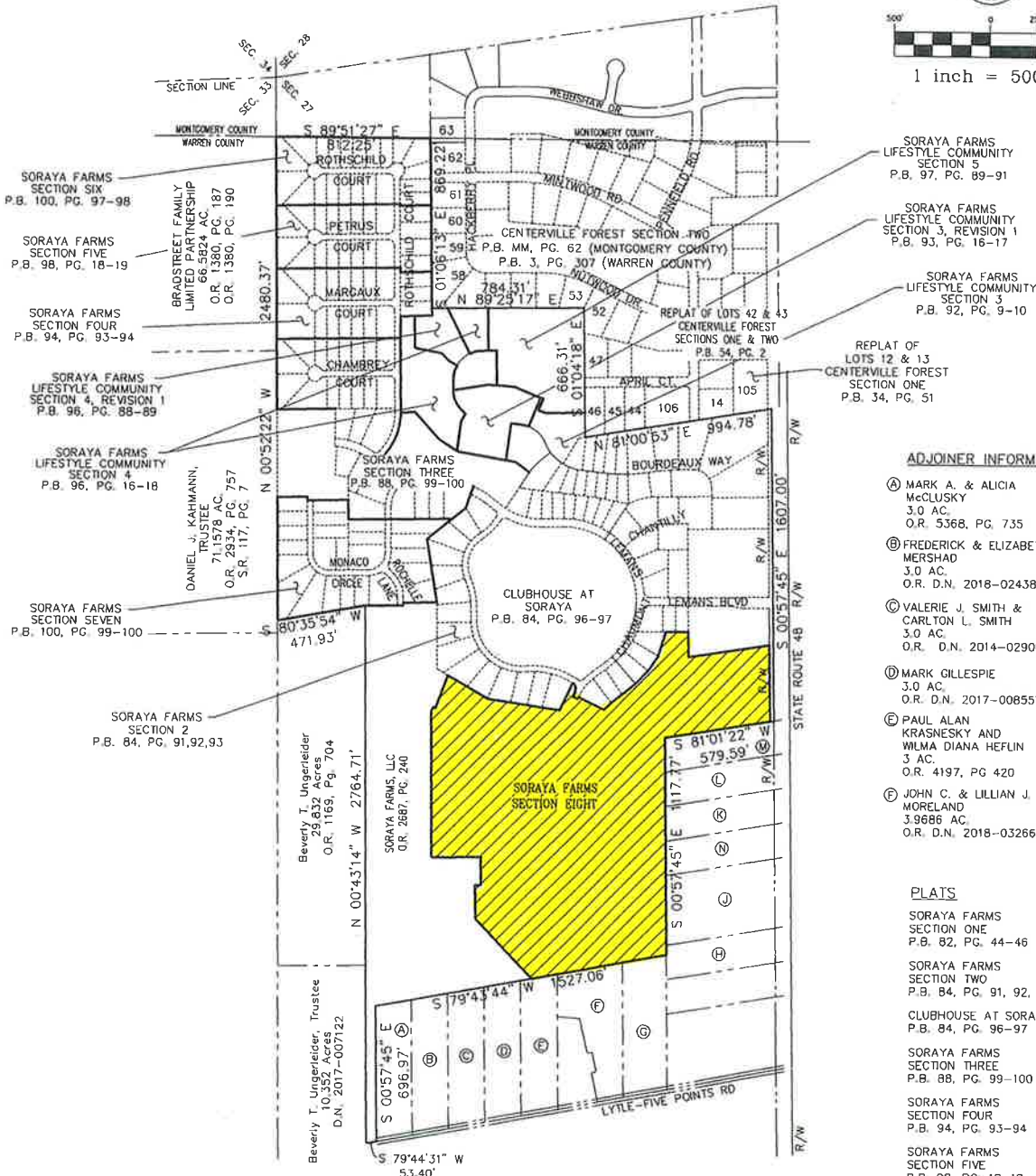
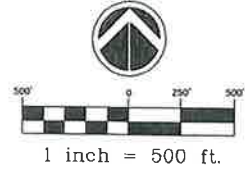


SORAYA FARMS SECTION EIGHT

LOCATED IN:
SECTION 27 TOWN 3, RANGE 5 M.R.s.
CLEARCREEK TOWNSHIP
WARREN COUNTY, OHIO
CONTAINING: 40.8899 AC.
DECEMBER, 2020



ADJOINER INFORMATION

- Ⓐ MARK A. & ALICIA McCLUSKY
3.0 AC.
O.R. 5368, PG. 735
- Ⓑ FREDERICK & ELIZABETH MERSHAD
3.0 AC.
O.R. D.N. 2018-024385
- Ⓒ VALERIE J. SMITH & CARLTON L. SMITH
3.0 AC.
O.R. D.N. 2014-029009
- Ⓓ MARK GILLESPIE
3.0 AC.
O.R. D.N. 2017-008557
- Ⓔ PAUL ALAN KRASNESKY AND WILMA DIANA HEFLIN
3 AC.
O.R. 4197, PG 420
- Ⓕ JOHN C. & LILLIAN J. MORELAND
3.9686 AC.
O.R. D.N. 2018-032664
- Ⓖ JOHN C. & LILLIAN J. MORELAND
3.631 AC.
O.R. D.N. 2018-032664
- Ⓗ VAA PROPERTIES LLC.
2.5 AC. ORIG.
O.R. 5465, PG. 20
- Ⓘ FIVE POINTS INVESTORS LLC.
5 AC.
O.R. 4478, PG 977
- Ⓚ JANET HICKS
2.5 AC.
O.R. D.N. 2018-007984
- Ⓛ NICHOLE A. ARBOGAST
2.5 AC.
O.R. D.N. 2016-019787
- Ⓜ NATHANIEL E. DUCKLO & KRISTA N. RANSON
2.5 AC.
O.R. D.N. 2018-020861
- Ⓝ JAMES L. CLANNIN
2.5 AC.
O.R. 155, PG. 358

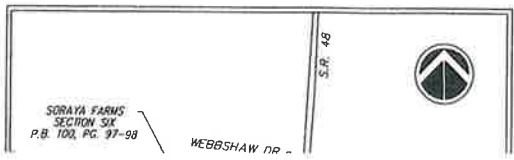
PLATS

- SORAYA FARMS SECTION ONE
P.B. 82, PG. 44-46
- SORAYA FARMS SECTION TWO
P.B. 84, PG. 91, 92, 93
- CLUBHOUSE AT SORAYA
P.B. 84, PG. 96-97
- SORAYA FARMS SECTION THREE
P.B. 88, PG. 99-100
- SORAYA FARMS SECTION FOUR
P.B. 94, PG. 93-94
- SORAYA FARMS SECTION FIVE
P.B. 98, PG. 18-19
- SORAYA FARMS SECTION SIX
P.B. 100, PG. 97-98
- SORAYA FARMS SECTION SEVEN
P.B. 100, PG. 99-100

SUPERIMPOSED AREA
1"=500'

SUPERIMPOSED NOTE:

ALL OF THE LANDS OF THE OWNER OF THIS 40.8899 AC. PARCEL BY O.R. 2687, PG. 240 ARE SHOWN ON THIS PLAT.



DE
Situ
con
Far

CE
i h
Chc